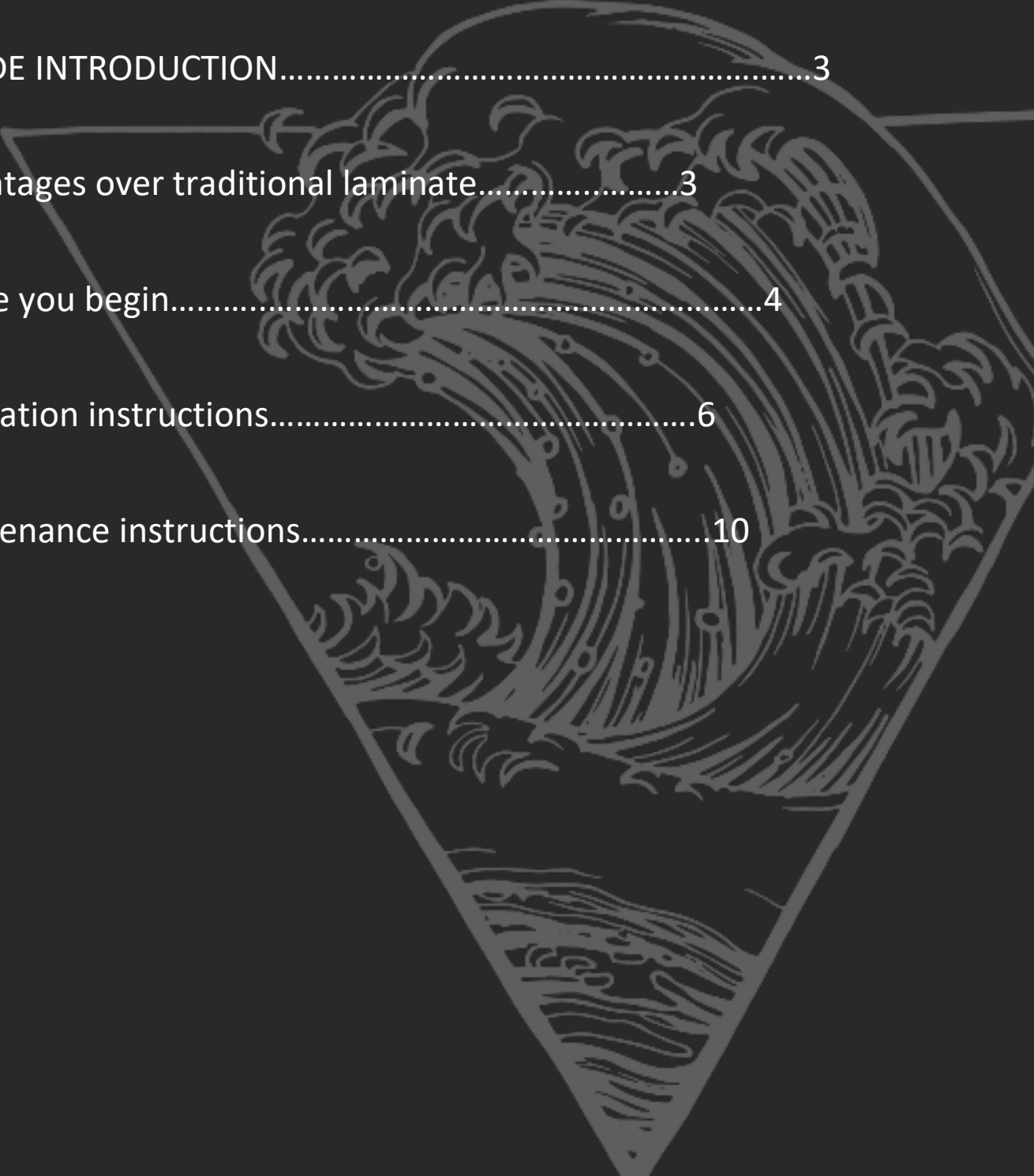


RIPTIDE

WATERPROOF LAMINATE FLOORS

TABLE OF CONTENTS

RIPTIDE INTRODUCTION.....	3
Advantages over traditional laminate.....	3
Before you begin.....	4
Installation instructions.....	6
Maintenance instructions.....	10



RIPTIDE has different concepts of laminate flooring, Riptide not only has excellent performance on water resistance, but we're also incorporated an extraordinary, patented click system from VALINGE to solidify locking performance. In addition, Riptide's surface uses TOP level wear resistance - AC4, with a high-density fiberboard as core material.

ADVANTAGES OVER TRADITIONAL LAMINATE

Next Level Waterproof Performance

Traditional laminate flooring expands dramatically after immersion in water or exposure to humid environments, but our RIPTIDE has a Hydrogen-Shield technology coating providing full protection preventing the buildup of water and moisture.

Superior locking system provided by Valinge's patented 5G technology.

- Traditional laminate floor's locking systems use CNC machining to profile the locks on the short side of the planks.
- Riptide used patented latch strips presented from Valinge's - 5G® technology.
- High-precision HOMAG CNC machine line, cutting locking profile, making every plank of the floor staying fixed in place
- Fully automatic lock strips loading station.

AC-4 SUPER WEAR RESISTANT

Surface of Riptide makes it better to resist various kinds of damage and has a long service life on your space. Our wear resistance has passed the test of EN13329:2016(LEVEL AC4) and has been certified by the following institutions.

- UNITED STATES ENVIRONMENTAL PROTECTION AGENCY
- INTERTEK
- SGS

High density fiberboard core material

makes Riptide stronger, solid, and environmentally friendly. In addition, we have done strict formaldehyde release test on the products and obtained the following certification

- FLOORSCORE
- CARB USA

BEFORE YOU BEGIN

tools and accessories

You will need the following tools below prior to starting installation

- Hammer
- Saw
- Jig-Saw
- Circular Saw
- Hand Saw
- Cross-Cut Saw
- Mouth Mask(during sawing)
- Pencil
- Tape Measure
- Safety Gloves
- Pulling iron
- Spacers
- Tapping bar suitable for the click system

You should consider the following accessories when installing

- Vapor Barrier Under-Pad
- T-Moulding
- Reducer Strip
- Over-lap Step Nosing
- Waterproof wax(Used for cutting incisions)

Prior to Installation of Riptide

- Let the planks acclimatize for 48 hours in the unopened packaging at the normal room temperature, in the middle of the room where the floor is to be installed. The ideal conditions are 15-22°C at a relative humidity of 35-50%. If climate conditions are outside this 30-75% range, we strongly advise to acclimatize for 1 week with opened packagers
- Remove any existing floor covering. Riptide cannot be installed over any other pre-existing floors.

- The flooring can be laid on top of a plywood flooring with the use of an underlay.
- The sub floor must be even, flat, dry with variations not exceeding +/- 2mm in 2m (0.08 in 6.6').
- All types of concrete and ceramic sub floors require insulation against dampness. Ensure the surface is structurally sound, clean, and dry.
- Floor must be level to 4.7mm per 3m radius (3/16" per 10 foot radius). Maximum deflection should be no more than 1.1mm (3/64").
- Substrate must be free of debris, dust, paint, varnish, wax, grease/oils, curing sealers, solvents and other contaminants.
- Any adhesive residue from prior flooring installations should be removed completely.
- Substrate must not hold excessive moisture or alkali.
- Moisture content of substrate is maximum 2.5% for acceptable installation condition. (CM Method).
- **NOTE:** Riptide should never be glued.
- After checking the subfloor for unevenness, carefully vacuum the entire surface. Make sure that the floor base is flat, clean, firm, and dry. To avoid the risk of squeaking, secure any loose particleboard, OSB, fiberboard, timber planks etc. with screws.
- Additional instructions apply if there is under floor heating or cooling. For health and safety reasons and to avoid problems with the Riptide, a floor surface temperature of maximum 27°C (80°F) is allowed.
- Riptide laminate flooring is designed to be installed as a floating floor to allow natural expansion and contraction with changes in temperature and humidity. To achieve the benefits of a floating floor and to avoid possible gaps, squeaking etc. never fasten the floor with nail, screws, silicone etc.
- Riptide laminate floor is mainly composed of natural wood and will naturally expand and contract upon changes in relative humidity. The dimensional variation of the installed floor will almost be equal in length and width. At 20°C and a relative humidity, RH, between 40-60%, the movement is minimal. Riptide laminate flooring is produced and delivered with a moisture content to cope with a RH between 30-60%. In dry climate, for example in the winter time, the RH might drop below 30% and in summertime rise above 70%. This will create movements in the floor surface. To secure enough clearance for the natural movements and to avoid possible open joints, squeaking etc. always keep a dilatation joint of 5mm average to walls, thresholds, staircases, pipes etc. during installation. Use the spacers of the installation kit to keep the right clearance. Installing in winter time in very low RH, the clearance to the wall should be lowered to 3 mm since the floor panels will shrink, and if installing in high RH climate the clearance should be raised to 8 mm since the floor panels will expand. The clearance must be left open and may NOT be filled by any sealant, silicone or other adhesive. Never fasten the floor with nails, glue, screws or in any other way .

- Cooking islands for kitchens and other very heavy objects should be installed first and not placed on top of the laminate. The laminate floor must be able to move around the heavy objects to avoid open joints and separating planks.
- RIPTIDE MAXIMUM RUN before transitions are required is 40 ft x 40 ft.

Installation instructions

The floor with hydro-shield technology are water resistant after installation. Following these instructions carefully makes the floor fit for use in bathrooms, kitchens, laundry rooms and entrance areas. The panels are not suitable for use in damp spaces like pool areas, saunas, and rooms with built-in drains like showers.

Step 1

First plank, first row.

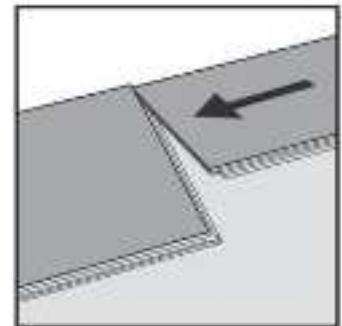
Place a distance ca 10 mm thickness to the left. and position the plank against the wall. Later, after 3 rows, you can easily position the flooring against the front wall with distances ≈ 10 mm.



Step 2

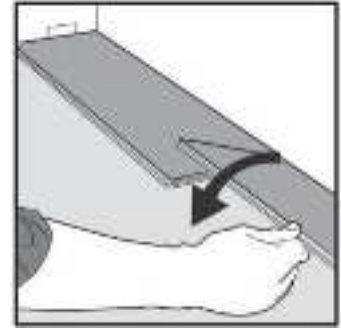
Second plank, first row

Place this plank gently but tightly to the short end of the first one.

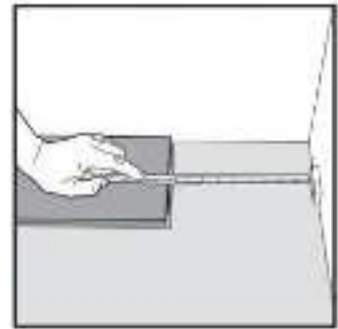


Step 3

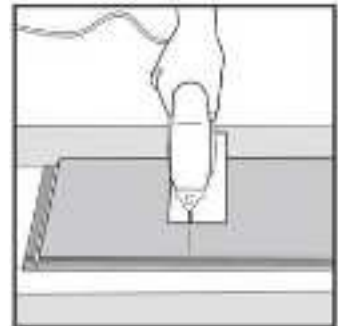
Fold the panel down in a single action movement. During the fold down, make sure the panels are tight against each other. Afterwards press or slightly knock at the short end just installed.

**Step 4**

At the end of the first row, put a distance of 10 mm, to the wall and measure the length of the last plank to fit.

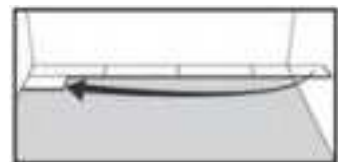
**Step 5**

Cut with a jig saw - hardwood turned down or with a hand saw with the hardwood visible.

**Step 6**

Second row

First plank min length 500 mm. Put a distance against the wall.



Step 7

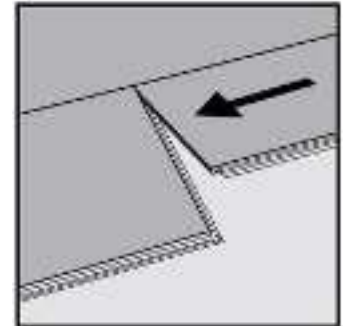
Generally Distance between short ends.

Minimum distance between short ends of planks in parallel rows shall not be less than ca 400 mm.

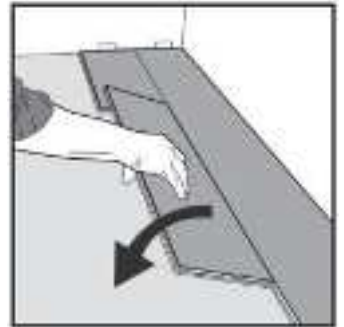
**Step 8**

Second plank, second row

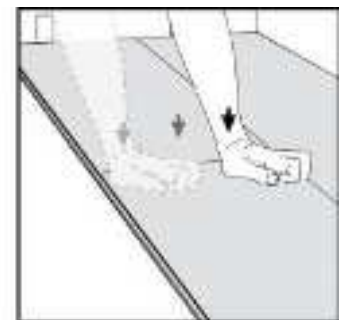
Place the panel gently and tight to the short end of the previous panel.

**Step 9**

Fold the panel down in a single action movement with a slight press to the left to the short end of the previous panel. During the fold down, make sure the panels are tight against each other.

**Step 10**

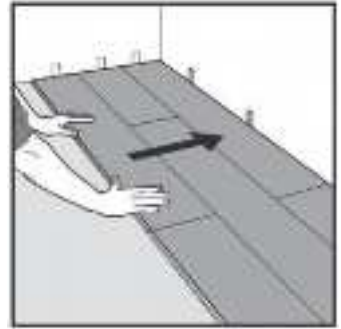
Press or knock slightly along the short end of the installed panel.



Step 11

After 2-3 rows.

Adjust the distance to the front wall by placing distances ≈ 10 mm.

**Step 12**

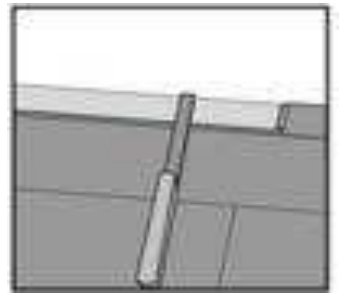
Last row (and perhaps also first row).

Minimum width 50 mm.

Remember distance to wall ca 10 mm.

TIP: Put a distance before measuring

Cut the panels lengthwise and glue the short ends.

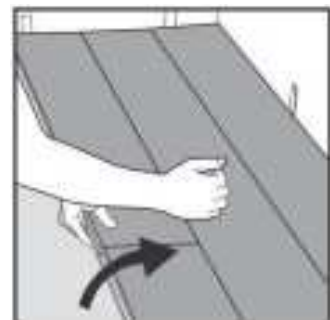


Disassembling instructions

Your floor can very easy be disassembled, which enables replacement during installation and during use.

Disassembling Step 1

Separate the whole row by carefully lifting up and slightly knocking just above the joint. Fold up and release the whole long side.



Disassembling Step 2

Disassemble the panels by sliding horizontally.
(Do not fold up!)

**Small panel widths**

Joining at short ends length cut panels.

Cut the tongue at the same time you cut the length of the panel and install as shown above.

Please note that the smallest width of a panel is ca 50 mm at the last row - if not - first row must be adjusted.

This can easily be calculated when measuring the room with before installation!

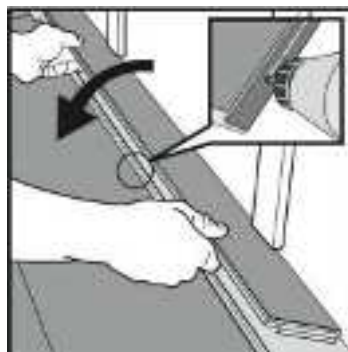
Horizontal installation

Cut off the locking element with a chisel, push the planks horizontally together. If necessary, place some distances between the last panel and the wall to keep the planks together during the curing time of the glue

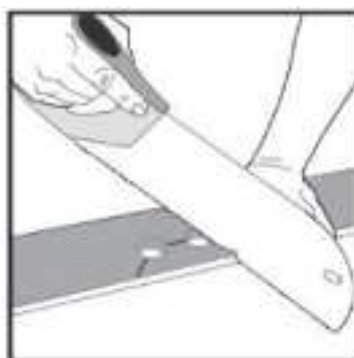
Installation around
larger than the



the holes



20 mm



Preventative Maintenance

-

Maintenance Instructions

- Use non staining mats or area rugs at doorways and entrance ways to collect excess water, sand, grit and debris. Clean the mats and area rugs on a regular basis.
- Do not slide heavy objects across the floor. Use plywood panels to move any heavy objects.
- Use proper glass, polished metal, or other non-staining cups or casters with a bearing surface of 1" or larger under frequently moved furniture and appliances to avoid scratches and indentations. Do not use felt pads. Periodically inspect the bottom of the floor protectors for dirt and debris that can damage the floor.
- Rolling casters on portable appliances, dishwashers, microwave carts, etc. May cause damage to laminate floors. Use caution when moving these items on laminate flooring. Protective plastic mats are recommended under frequently moved furniture with castors, such as desk chairs.

Routine Maintenance

- Sweep or vacuum (do not use beater bar) Riptide to remove dirt and debris that can cause scratches or dull the finish.
- Clean up all spills immediately with a damp cloth. Do not allow liquids to remain on laminate flooring.
- Periodically damp mop laminate floor with floor cleaner or equal neutral floor cleaner. Dilute floor cleaner accordingly.
- Do not flood the laminate floor with water or put water or any other liquids directly on the floor. Excessive water will damage your floor, resulting in peaked edges, warping, swelling and delamination.
- Do not use soap or oil-based cleaning products. Do not use abrasive cleaners, steel wool or scouring powder.
- Do not wax or polish laminate flooring. Do not dry buff or burnish laminate flooring.
- For tough spots or stains such as oil, paint, markers, lipstick or similar, use nail polish remover or acetone* on a clean white cloth. Do not pour liquid directly on the floor. For hard to remove items such as chewing gum or candle wax, freeze the item with ice, then carefully scrape off with a plastic spatula.