

TRANSCEND 8.3

INSTALLATION REQUIREMENTS

1. GENERAL INFORMATION

- 1.1 - **Transcend** features an Engineered High Density Water Resistant Core, that is ATCM 93120 CARB Phase 2 and FloorScore® Certified, in compliance with all indoor air quality requirements.
- 1.2 - **Transcend** incorporates the Angle-Angle installation system with the patented Välinge technology that allows for an effortless floating floor installation. **Transcend** is not recommended for applications with heavy point loads and subjected to heavy rolling loads. In those applications a glue down product is recommended.
- 1.3 - **Transcend** has a high definition decor and durable wear layer that is suited for residential and light commercial environments*. (*Light commercial use is defined as environments such as boutiques, light retail, offices, hotel suites, etc... areas using residential maintenance practices rather than commercial maintenance techniques and that are not exposed to heavy commercial traffic.)
- 1.4 - **HIGH MOISTURE AREAS**
Use 100% silicone sealant around all perimeter areas of rooms where excessive moisture may be present; such as at sinks, dishwashers, bathrooms, around pipes, etc.
- 1.5 - **Transcend** can be installed over hydronic or electric in-floor heating systems approved for engineered flooring. Maximum temperature must not exceed 28°C (82°F). In-floor heating must be covered with a minimum 25 mm (1") of concrete.
- 1.6 - Exposure to direct sunlight can cause damage to flooring and other interior finishes. During peak sunlight exposure, window coverings are required.
- 1.7 - Engineered floors are manufactured in accordance with accepted industry standards, which permit a manufacturing tolerance of up to 5%. When ordering the flooring, 5% must be added to the actual square footage for needed cutting and grading allowance. The floor should be installed from several boxes to ensure a good mix of materials and all end joints must be staggered at least 200 mm (8") for strength and stability.

2. DELIVERY, STORAGE & ACCLIMATION

- 2.1 - Material shall not be delivered until the site is climate controlled and within required tolerances (listed below), unless an appropriate climate-controlled storage area is provided.
- 2.2 - All flooring and related materials shall be conditioned or acclimated within the area of installation and be adequately protected from soil, dust, moisture and other contaminants during this time. The conditioning shall be for 72 hours before installation or until the materials reach the required temperature of the installation area.

2. DELIVERY, STORAGE & ACCLIMATION

- 2.3 - The flooring should be acclimated to service conditions per NFCA guidelines. The ambient temperature should be maintained between 18°C - 28°C (65°F - 82°F) and subfloor temperature should be between 15°C - 24°C (60°F - 75°F). Relative Humidity shall be between 35% - 50%.

- 2.4 - Cartons should be stored on a smooth, flat, sturdy horizontal surface. Do not store cartons on end. It is recommended that cartons not be stacked more than 4 high during acclimation. Do not store cartons outside.

3. SITE CONDITIONS

- 3.1 - Flooring installation shall not commence until the building is enclosed.
- 3.2 - Substrates must be structurally sound, clean, dry, smooth, and flat to within a tolerance of 4.7 mm (3/16") in 3 m (10').
- 3.3 - Concrete substrates must have an effective moisture barrier present under concrete.
- 3.4 - Wooden substrates must be free from deflection and conform to building code requirements.
- 3.5 - **Transcend** can be installed over existing cement, terrazzo, wood, ceramic, and single-layer non-cushioned resilient flooring. The existing flooring must be sound, solid, well-adhered, and free of any wax or any other substances. Any cuts, gouges, dents, grout joints or irregularities in the existing flooring must be repaired to match the requirements noted above.
- 3.6 - All substrate defects likely to impair finished work must be corrected before installation. Cementitious patching compounds are recommended to repair substrate defects. Please follow patch manufacturer recommendations.
- 3.7 - **Transcend** can be installed over hydronic or electric in-floor heating systems approved for engineered flooring. Maximum temperature must not exceed 28°C (82°F). In-floor heating must be covered with a minimum 25 mm (1") of concrete.
- 3.8 - It is the responsibility of the installer/owner to inspect all materials carefully before installation, and to determine if the substrate and jobsite conditions are acceptable for floor installation. The manufacturer is not responsible for floor failure resulting from improper installation or substrate deficiencies, jobsite damage, or any visible defects after the floor has been installed.

NOTE: GLOSS VARIANCE/LOSS or DYE LOT related issues are not covered by the manufactures warranty.

4. FLOATING FLOOR INSTALLATION

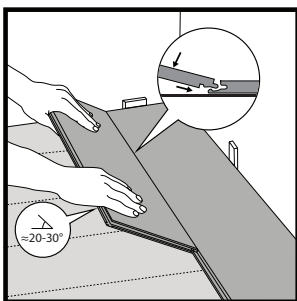
- 4.1 - **Transcend** flooring can be cut with a fine-tooth multipurpose saw blade, guillotine cutter, or scored with a utility knife.

TRANSCEND 8.3

INSTALLATION REQUIREMENTS

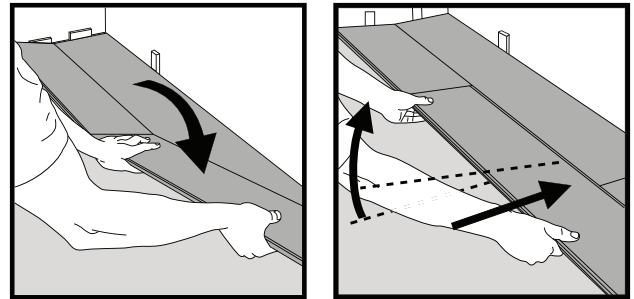
4. FLOATING FLOOR INSTALLATION

- 4.2 -** Planks should be taken from several boxes to ensure a blend of color and design. Carefully check all planks for any defects. Ensure that you have the correct material and that all the cartons are from the same production lot. Do not install any planks from different production lots. No claims will be accepted for material that has been installed with visual defects. Prior to installation: Ensure all subfloor surfaces conform to requirements for flatness, temperature, moisture, and contaminant removal.
- 4.3 -** Inspect all planks before installation. Planks with visible flaws should be culled. If possible, culled pieces may be used as starting or finishing pieces, once flaws have been cut away. Ensure all joints and edges of the Välinge Angle-Angle Locking system are free from damage and debris.
- 4.4 -** A transition allowing a 8.3 mm (5/16") gap must be in place when installations are greater than 7 m (24') in any direction.
- 4.5 -** It is recommended that the flooring is installed parallel to the longest wall. Use a chalk line as a guide to ensure the first row is straight.
- 4.6 -** Maintain a 8.3 mm (5/16") gap at all vertical and fixed objects. The use of spacers is recommended to prevent movement during installation.
- 4.7 -** Measure the row before laying the first plank. The cut planks should not be less than 200 mm (8"). If less than 200 mm (8"), trim the starting plank as necessary. Ensure end joints of planks are a minimum of 200 mm (8") apart from adjacent rows.
- 4.8 -** Install the first row by laying the first plank in the left-hand corner of the room, with the tongue facing the starting wall, allowing a 8.3 mm (5/16") gap between the plank and all vertical fixed objects. Lock the second plank into place at the short end joint. Continue laying planks together until the row is completed. Cut the last row to length, ensuring expansion space is maintained.
- 4.9 -** Cut first plank of second row to length. Align the end joint and lock into place. Next engage the long joint by pulling the locking mechanism together. The second row should be engaged at an angle between 20° - 30°. When properly engaged, the long joint and plank will lay flat. If not aligned properly, the locking mechanism will not engage. Ensure there is no damage or debris preventing proper alignment. ***DO NOT use a hammer or tapping block to install the planks.**



4. FLOATING FLOOR INSTALLATION

- 4.10 -** Line up the next full plank and engage the long joint while gently folding the short joint into place. When engaged properly, the joints will be flush with adjacent rows. Do not use a tapping block.



- 4.11 -** Continue installing planks following the same technique, cutting the last plank of each row to size, maintaining the 8.3 mm (5/16") gap at all fixed vertical objects.
- 4.12 -** Trim the final row to size, scribing the planks to the wall as necessary, while maintaining the 8.3 mm (5/16") expansion gap.
- 4.13 -** For rows that need to be trimmed down to 50 mm (2") or less, it is recommended to use a small bead of adhesive in the joints. Use a professional grade engineered flooring glue. Contact your distributor for further details on appropriate adhesives.
- 4.14 -** Door jambs and casings must be under cut to allow 8.3 mm (5/16") expansion space. Transitions are recommended at all doorways, transitions must allow a 8.3 mm (5/16") gap to accommodate the floating floor system. Attach transitions directly to the subfloor, not the installed planks, as this could compromise the floating floor system, resulting in installation failure.
- 4.15 - HIGH MOISTURE AREAS**
Use 100% silicone sealant around all perimeter areas of rooms where excessive moisture may be present; such as at sinks, dishwashers, bathrooms, around pipes, etc.
- 4.16 -** Thoroughly clean the area and check the installed floor for any damage or defects, replace any planks as necessary. Remove all spacers and install baseboards.
- ### 5. RADIANT HEATED FLOOR INSTALLATION
- 5.1 -** Maximum allowable temperature is 28°C (82°F).
- 5.2 -** The heating system must be fully operational at normal temperature for a minimum of 21 days prior to the flooring installation.
- 5.3 -** The heating system must be turned off 48 hours prior to the flooring installation and must remain off for 48 hours after the flooring installation.

TRANSCEND 8.3

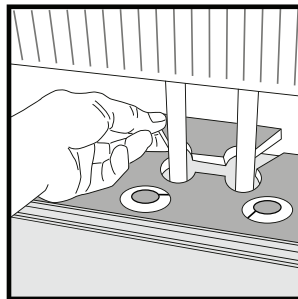
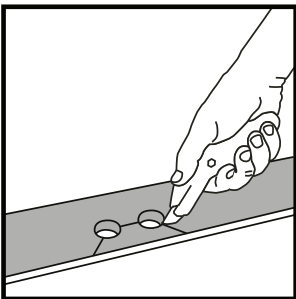
INSTALLATION REQUIREMENTS

5. RADIANT HEATED FLOOR INSTALLATION

- 5.4 - Starting 48 hours after the completion of the flooring installation, gradually increase the temperature over a 7 day period at 2°C increments to the normal operating level. Never allow the surface temperature to exceed 28°C (82°F).
- 5.5 - Maintain the required interior humidity level between 35% - 50% at all times.
- 5.6 - During cold periods with increased heating, the indoor air humidity may become too low and can be overcome with the use of a room humidifier.
- 5.7 - During hot periods, the indoor air humidity may become too high and can be overcome with the use of a room dehumidifier.
- 5.8 - It is required to apply a small amount of a professional grade engineered flooring glue to the end joints of each panel in order to avoid any excessive end joint movements caused by "Hot Spots" in the radiant heated floor.

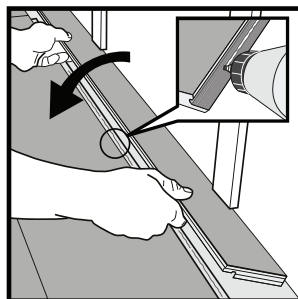
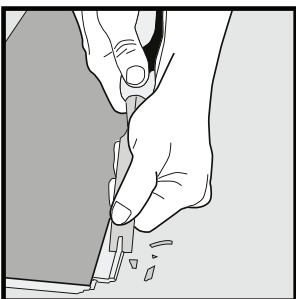
6. INSTALLATION AROUND RADIATOR/HEATING PIPES

- 6.1 - Drill holes 8.3 mm (5/16") larger than the diameter of the pipes. Remove a piece of the panel with a utility knife. Put the panel on side of the pipes and the removed piece on the other side. Bond the cutout piece to the panel using a professional grade engineered flooring glue. Be careful not to bond to the subfloor or any fixed objects. Contact your distributor for more information.



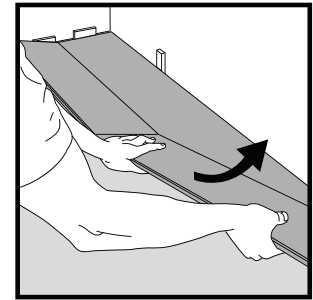
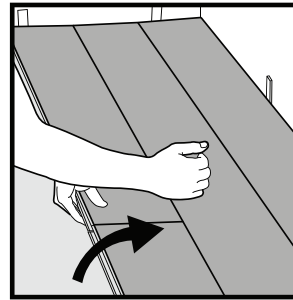
7. WHEN INSTALLING AT AN ANGLE IS NOT POSSIBLE

- 7.1 - Remove the vertical locking part of the groove with a chisel or utility knife, put appropriate glue on the bottom of the groove and push the panel into place. Place spacers between last board and the wall.



8. DISMANTLING PANELS

- 8.1 - Separate the entire row by carefully lifting up and release the entire row. Fold up the row and release the entire long side. Disassemble the panels by lifting the short end upwards. Never fold up a panel, as this could damage the locking profile.



9. CARE & MAINTENANCE

- 9.1 - Transcend does not require additional coatings or waxes.
- 9.2 - Wipe up spills quickly. Do not allow standing water to permeate through to the subfloor.
- 9.3 - Support furniture with wide-bearing, non-staining floor protectors. Ideally, the protectors should be at least 25 mm (1") wide, made of non-pigmented plastic or felt, and rest flat on the floor. Urethane or neoprene casters, felt pads, or floor protectors are recommended for all movable furniture. Use protection mats under chairs with casters.
- 9.4 - Use plywood or other protective material to cover flooring when moving furniture or appliances into position.
- 9.5 - Use walk-off mats at all room entrances to prevent dirt, sand, grit and other damaging substances from being tracked onto the floor. Use non-staining mats. Do not use rubber or latex backed mats.
- 9.6 - For regular cleaning, sweep, or vacuum using a hardwood attachment. Do not use a vacuum with a beater bar. Damp mop floors using a PH neutral cleaning solution. Follow the manufacturers directions for using PH neutral cleaners.
- 9.7 - Exposure to direct sunlight can create excessive heat and can damage flooring and other interior finishes. During peak sunlight exposure, window coverings are required.
- 9.8 - For heavily soiled floors, use a neutral cleaner and scrub with a red pad or microfiber cloth. Rinse the pad/cloth frequently.
- 9.9 - For additional maintenance information, please contact your distributor.